



Showtime 2019

Costume guide

A few things....

- What to bring to showtime week for the first dress run:
 - Laundry basket for all your costumes (label EVERYTHING you bring with your name, even shoes!)
 - Deodorant
 - Any makeup or hair utensils
 - Showtime T-shirt and a pair of jeans for the opener
 - A nice dress outfit for the closer

Green Room access is available to students that are in 7 or more acts including the opener and closer. A choir officer will compile a list of students after specialty acts have been decide.

If you have **Quick Changes** in the wings:

Women: you must wear a leo/tank top and spanks/bike shorts. We will have a list of all that quick change in the wings and will check to see you have these items before every show. If you do not have them, you will not be permitted to perform.

Men: You must wear a tank top and compression shorts. We will have a list of all that quick change in the wings and will check to see you have these items before every show. If you do not have them, you will not be permitted to perform.



Women's Chorale

- Women's Power Medley
 - Shades of Purple
 - Can use black as an accent color
 - Shoes can be heels or flats, no tennis shoes
 - All dresses must adhere to MHS dress code

Women's Chorale

Boogie Woogie Bugle Boy

- 1940's style dresses or blouse and skirt, Black Choir shoes
- All dresses must adhere to MHS dress code
- Red, White and Blue split by last name
 - Red A thru G
 - Blue H thru M
 - White N thru Z



Men's Chorale

Pirates Who Don't Do Anything

- Must wear shoes(black or brown or all black sneaker)
 - No bear chests
- Bonus points for guyliner



Men's Chorale

- Steppin to the Bad Side

- Black , White and Grey
- Bowtie and Suspenders
- No hats
- Black sneakers for dress shoes





Women's Chorus

Proud Mary

- Black, Gold, Leather, Sequins
- Black Heels
- All dresses must adhere to MHS dress code



Women's Chorus

Dreamgirls in their Finest Suit

- Shades of blue
- Black accents(no white shirts), Sparkle accents
- High Low dress or skirt
- All dresses must adhere to MHS dress code



Men's Chorus

But It's Alright

- Yellow, Grey, White, Blue(any combo you want)



Men's Chorus

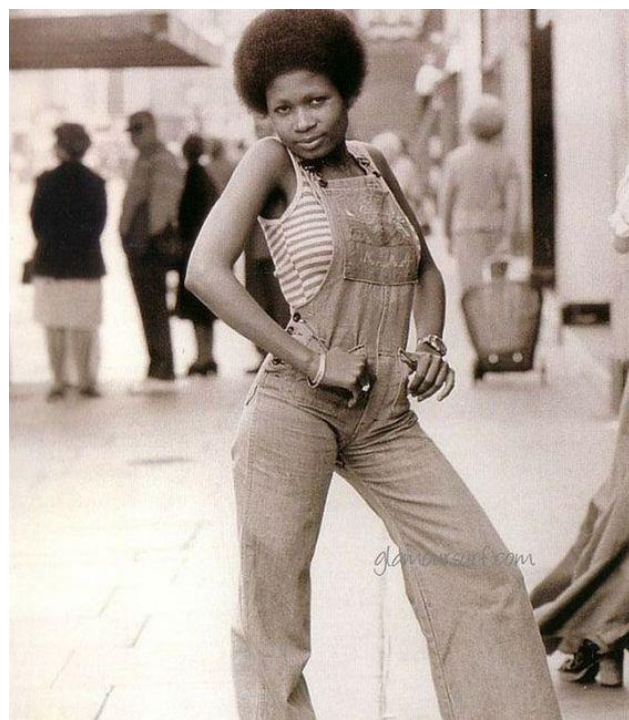
Shoeless Joe

- White and Green Baseball T, Blue jeans, white sneakers
- Green ball cap optional



Concert Choir

- Come from Away
 - Red and Black buffalo check
 - All dresses must adhere to MHS dress code



Concert Choir

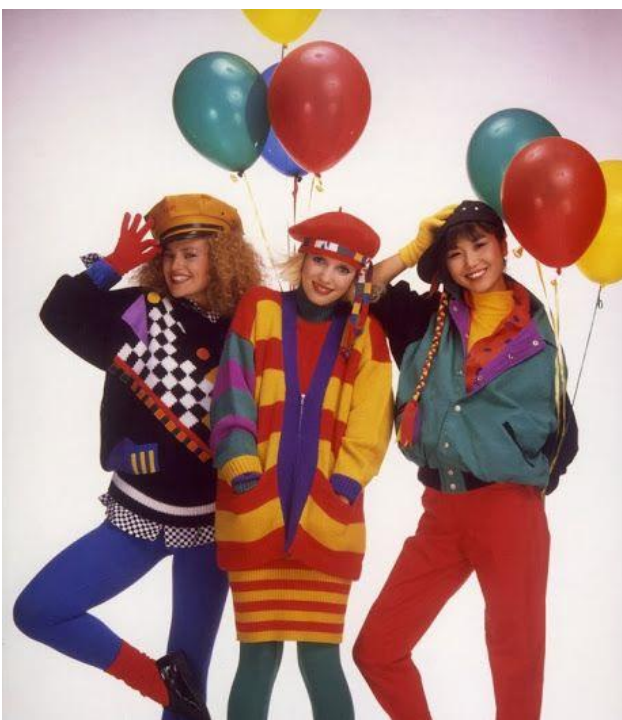
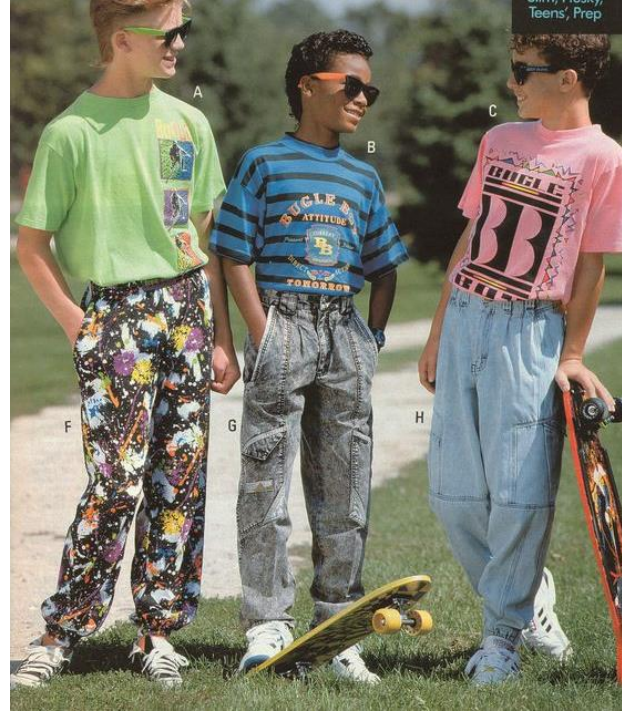
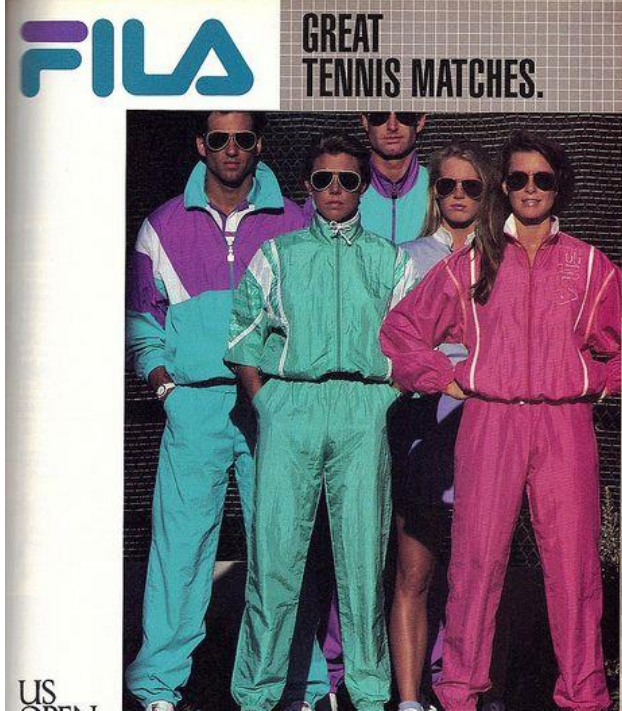
- Come Sail Away
 - Late 1970's
 - Bell bottoms, Crazy floral prints, Jumpsuits,
 - Any color
 - All dresses must adhere to MHS dress code



Encore

From Now On

- Victorian Hippster
- Circus Flair
- Optional Crazy color wigs (must be lace front, ladies only)
- All dresses must adhere to MHS dress code



Encore

Jump

- Fun 80s
- Any color, Track suits, Acid wash jeans, High tops, Leos and tights
- All dresses must adhere to MHS dress code